



Phaëton

The Official Newsletter of the
Maryland Entomological Society

Volume 42, Number 12

September 2022

EDITOR: Aditi Dubey – aditid26@gmail.com

FACULTY SPONSOR: **Frank E. Hanson**
Department of Biological Sciences
University of Maryland Baltimore County (UMBC)
1000 Hilltop Circle
Baltimore, MD 21250

WEBSITE: <http://www.mdentsoc.org/>



When:
October 14th – November 11th, Friday, 10 AM EST

10/14: Doug Tallamy, University of Delaware
Pollinators' Best Hope: A New Approach to Pollinator Habitat That Starts in Your Yard

10/21: Harland Patch, Penn State University
Creating Pollinator Gardens: the Role of Plant Choice and Design

10/28: Heather Holm, Author and Biologist
Creating and Managing Habitat for Native Bees

11/4: Matthew Shepherd, The Xerces Society for Invertebrate Conservation
Deciding To Create A Pollinator Garden Is The Easy Step -- What To Do Next?

11/11: Shana Byrd, The Dawes Arboretum
Getting Started with Wildflower Patches, Flower Strips, and Meadows

Each session will last approximately 60 minutes plus questions. Register once to attend any/all sessions. All webinars will be recorded and posted on [the Bee Lab website](#).

Find more information and register at:
https://osu.zoom.us/webinar/register/WN_y1hvBGcRC28dybWXTGgQ

MES IS NOW ON YOUTUBE!

The Maryland Entomological Society now has a YouTube channel. featuring recordings of our meeting guest lectures. Additional recorded lectures will soon be added.

The recordings can be accessed at:

https://www.youtube.com/channel/UC_0ubQ3CcHV0VtT_7FIGqIQ

**INVITATION TO SUBSCRIBE TO
THE ENTOMO-L LISTSERV**

If you like any topic related to entomology (*sensu lato*), consider subscribing to the Entomo-L listserv.

How?

- a) The easiest way is to email me: blayj@psu.edu and asked to be subscribed. I will do that manually.
- b) Indicate whether you want to receive an email whenever someone posts or receive a digest at the end of the day.

Sincerely,
Jorge

Jorge A. Santiago-Blay, PhD
Adjunct Lecturer in Biology
The Pennsylvania State University - York Campus
<https://naturalhistory.si.edu/staff/jorge-santiago-blay>

Moderator of Entomo-L: To subscribe, send an email to: listserv@lists.psu.edu. For further questions, please, email me.

To share ENTOMO-L with others, please have them email listserv@lists.psu.edu and in the body of the email put: "Subscribe Entomo-L Firstname Lastname" And no other text; omit any signature. The subject is optional, and if desired "Subscription" will work.

To unsubscribe from the ENTOMO-L list, click the following link: <https://lists.psu.edu/cgi-bin/wa?SUBED1=ENTOMO-L&A=1>.

**ROMA CBP AGRICULTURE SPECIALIST
INTERCEPTED A FIRST-IN-NATION PEST**

Release Date 08/26/2022

CALEXICO, Calif. – U.S. Customs and Border Protection agriculture specialists at the Calexico East port of entry commercial facility intercepted a “First-in-Nation” pest, a minute insect commonly known as a “leafhopper.”

The incident occurred on July 26, when a shipment of celery and fresh peppers arrived at the Calexico East Cargo Facility. CBP officers referred the shipment for further agricultural inspection. During an intensive inspection, a live adult Hemiptera specimen, tentatively identified as Cicadellidae, was found by agriculture specialists in the shipment of celery. The specimen was submitted to local U.S. Department of Agriculture (USDA) Animal and Plant Health Inspection

Service (APHIS) Plant Protection and Quarantine (PPQ) and was then referred to a specialist for identification.



On July 29, the USDA APHIS PPQ specialist confirmed the final identification as *Kunzeana versicolora* (Cicadellidae), an actionable pest. Per local USDA APHIS PPQ, the *Kunzeana versicolora* qualifies as “First-in-Nation” interception. The Cicadellidae are commonly known as leafhoppers. These minute insects are plant feeders that suck plant sap from grass, trees, and shrubs. Leafhopper feeding causes leaves to develop pale specks. Some leafhopper species transmit plant pathogens that cause plant disease.

“Our CBP agriculture specialists are always on the lookout for those miniature threats that can harm our economy,” said Anne Maricich, CBP Acting Director of Field Operations in San Diego. “Their perseverance and commitment are remarkable, and our country is the one that benefits the most from it.”

The truck and shipment were returned to Mexico by CBP as a precautionary measure.

More information regarding CBP’s agriculture inspection mission may be found at this [link](#).



BEECON 2022 HYBRID CONFERENCE

When: Thursday, October 13th and Friday October 14th

Registration and a Call for Abstracts are now open for BeeCon2022! BeeCon is an annual bee conference, this year running as a hybrid event with Thursday, Oct. 13, 2022 being entirely virtual and Friday, Oct 14, 2022 being held in person at York University (Toronto, Ontario) with a virtual option still present. It originated as a conference for Southern Ontario researchers, but now brings local, national and international bee biologists together to discuss bee behaviour, taxonomy, genomics, ecology, and conservation. BeeCon is hosted by BEEc, or the Centre for Bee Ecology, Evolution and Conservation at York University.

Interested in presenting? The deadline to submit your application with abstract is Wednesday, September 21, 2022.

Apply: <https://www.yorku.ca/bees/beecon-proposals/>.

The deadline to register for in-person or virtual attendance is Friday, September 30, 2022. There is no cost to register thanks to our sponsors: the Faculties of Science and Environmental and Urban Change and the Office of the VPRI at York University. Register: <https://www.yorku.ca/bees/beecon-2022-registration-page/>.

Visit <https://www.yorku.ca/bees/beecon/> for more information.



DEPARTMENT OF ENTOMOLOGY COLLOQUIA

Friday, 30 September 2022, 12:00 p.m.

From microbes to genetics: uncovering the story behind invasive sorghum aphids

Dr. Jocelyn Holt (EEB Fellow, Department of BioSciences, Rice University)

Friday, 7 October 2022, 12:00 p.m.

TBA

Dr. Henry Chung (Assistant Professor, Department of Entomology, Michigan State University)

Friday, 14 October 2022, 12:00 p.m.

TBA

Maria Cramer & Dr. Nathalie Steinhauer (Ph.D. Candidate, Hamby Lab & Science Coordinator, Bee Informed Partnership, Department of Entomology, University of Maryland)

Friday, 21 October 2022, 12:00 p.m.

Serving the public as a government scientist: Career tracks and opportunities

Dr. Chris Peterson (USDA, Foreign Agricultural Service)

Friday, 28 October 2022, 12:00 p.m.

TBA

Dr. Daniel Caetano (Department of Biological Sciences, Towson University)

Entomology colloquia take place in 1130 Plant Sciences Building, College Park, MD. For additional information, go to: <http://entomology.umd.edu/calendar.html>.



CENTER FOR BEE ECOLOGY, EVOLUTION, AND CONSERVATION: BEE BIOGEOGRAPHY AND SYSTEMATICS TALKS

Wednesday, September 28th, 11 AM

Recent advances in *Lasioglossum* Systematics: Phylogeny,

Taxonomy, and Classification

Dr. Jason Gibbs (Curator, J.B. Wallis/R.E. Roughley Museum of Entomology) & Joel Gardner (PhD Candidate, University of Manitoba)

For recordings of previous talks, visit:

<https://www.youtube.com/channel/UCB0ZDMNcqIJam-zHU-bLZA>

Find more information and register at:

<https://www.yorku.ca/bees/packer/>



SHARING THE LEPIDOPTERA EXPERIENCE

When: Wednesday, September 28th, 7:00 PM – 8:00 PM

Where: NHSM, 6908 Belair Rd, Baltimore, MD

AND Online via Zoom

Long-time Lep Club members Phyllis Kepner and Dee McGuire will share their experiences with raising moths and butterflies. Dee says:

“We hope to generate welcoming responses and questions from participants. It is not necessary to be a Lepidoptera expert.”



“The emphasis is learning and sharing in an atmosphere with those who have had practical and successful results with moths and butterflies and with those who are learning. We hope to stimulate interest now and for future raising of butterflies and moths thru the NHSM’s Lepidoptera Club.”

The presentation will include visuals, triptych boards showing aspects of butterflies and moths, samples of cocoons,

chrysalis, information about habitat choices, book recommendations, and some hand outs.

Attendees are asked to please bring caterpillars (butterflies or moths) to share — also name the host plant for each.

Find more information and register at:

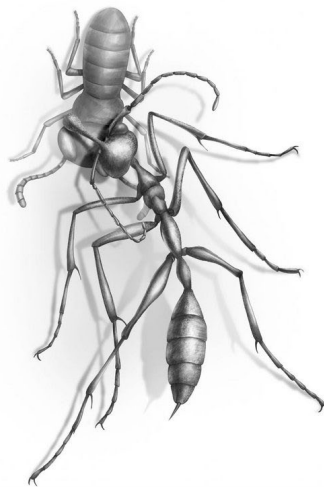
<https://www.marylandnature.org/get-involved/events/event/sharing-the-lepidoptera-experience/>



**JEWELS AND STONES:
WHAT FOSSIL ANTS TELL US**

When: Wednesday, October 5th, 7:00 PM – 8:00 PM

**Where: NHSM, 6908 Belair Rd, Baltimore, MD
AND Online via Zoom**



This talk will examine the fossil record of ants that stretches back over 100 million years. The rise of ants as one of the dominant groups of terrestrial animals will be examined in light of their rather extensive fossilized remains.

Dr. John LaPolla received a Ph.D. in Entomology from Rutgers University in 2004; from 2004-2006 he was a postdoctoral fellow at the Smithsonian Institution in the National Museum of Natural History in the Entomology Dept. He has been at TU since 2006 where he is now a full professor.

Find more information and register at:

<https://www.marylandnature.org/get-involved/events/event/jewels-and-stones-what-fossil-ants-tell-us/>



VENUS FLYTRAPS: A POLLINATION PUZZLE

When: Thursday, October 27th, 7:00 PM – 8:00 PM

Where: Online via Zoom

Most people can recognize the Venus flytrap, but few know that it only grows natively in North and South Carolina. This talk will discuss the ecology of this rare plant, its conservation challenges, and recent insights into its pollination biology.



Bio: Laurie Hamon is a postdoctoral research fellow in the Entomology & Plant Pathology Department at North Carolina State University. Her doctoral dissertation focused on the pollination ecology of the Venus flytrap.

Find more information and register at:

<https://www.marylandnature.org/get-involved/events/event/4633/>



**AQUATIC MACROINVERTEBRATES IN 3 PARTS
WITH KEN BELT**

When:

Day 1: Tuesday, September 27th, 7 PM to 9 PM, Online via Zoom

Day 2: Saturday, October 1st, 11 AM to 3 PM, In the field exploring streams

Day 3: Sunday, October 2nd, 12 PM to 4 PM, In the classroom using microscopy for ID

Those dragonflies and mayflies soaring through the air over a stream, got their start in a stream as an aquatic macroinvertebrate, small aquatic animals and the aquatic larval stages of insects. They include dragonfly and stonefly larvae, snails, worms, and beetles. Often found attached to rocks, vegetation, logs and sticks or burrowed into the bottom sand and sediments, macroinvertebrates play important roles in stream ecology as nutrient cyclers and as food for upper levels of the food chain. They are also used by scientists to assess water quality. As a plus, they are just really cool.



In this 3-Part Workshop, led by stream ecologist, Ken Belt, you will learn about the life history of aquatic insects, role of these insects in freshwater aquatic ecosystems, and insect structure, morphology and adaptations. How the presence or absence of various species are indicators of water quality will also be covered. By the end of the workshop, you should be familiar with the common macroinvertebrate orders at a glance and have the taxonomic tools at your fingertips to identify whatever you may encounter including macroinvertebrates.org, an online identification tool for Common Freshwater Macroinvertebrates of Eastern North America.

Registration is \$125 for NHSM members and \$144 for non-members.

Find more information and register at:

<https://www.marylandnature.org/get-involved/events/event/aquatic-macroinvertebrates-in-3-parts-with-ken-belt/>

NATURAL
HISTORY
SOCIETY of Maryland



NHSM SEPTEMBER 2022 RAFFLE

This month we are offering a \$500 REI gift certificate and a lifetime membership to NHSM.

As an NHSM Lifetime Membership (value \$750) member you will receive discounts on many of our programs—from lectures, workshops, and courses offered in our museum—to canoe trips, nature walks, and fossil hunts in the great outdoors.

PLUS

This month we are letting you decide what you need for your camping and outdoor gear for this summer. The raffle prize for May is a \$500 Gift Certificate to REI! Just what you need to make your summer outdoors even better!

Need a tent? A new backpack? Binoculars? Maybe a camp stove? Or just a new pair of boots? It's up to you! REI has everything you need to enjoy the outdoors (other than our programs!). Take a chance and help us keep the programs coming by buying a ticket or two.

Tickets are \$5 and buying more than one ticket increases your chances of winning. Tickets will be sold to benefit the Natural History Society of Maryland. Cut-off date to be entered is September 30th at midnight.

Get more information and purchase your tickets at: <https://www.marylandnature.org/get-involved/raffle/>.

2022/2023 PROPOSED MES EVENT SCHEDULE

Due to the COVID-19 pandemic, regular MES lecture/meetings are currently being held virtually on Zoom at 7:00 p.m. on the 3rd Friday of each of 6 months coinciding with UMBC's academic year. Proposed events for the current MES membership year are:

Date	Speaker	Topic
Oct 21	Colin Studds	Dragonfly Migration Monitoring
Nov 18	Mark Metz	Micro Moth Systematics
Feb 17	Jennifer Selfridge	Rare Butterflies
Mar 17	TBA	TBA
Apr 21	TBA	TBA
May 19	TBA	TBA

OCT 2022-SEP 2023 MES MEMBERSHIP YEAR OFFICERS

President	Frederick Paras
Vice President	(vacant)
Secretary	Janet A. Lydon
Treasurer	Timothy W. Thompson
Historian	(vacant)
Faculty Sponsor	Frank E. Hanson
Journal Editor	Eugene J. Scarpulla
E-newsletter Editor	Aditi Dubey

SUBMITTAL DEADLINES

October 2022 issue of the Phaëton:

Please send items by Sunday, 16 October 2022 to Addie at aditid26@gmail.com.

September 2023 issue of The Maryland Entomologist:

Please send first drafts of articles and notes by 1 April 2023. Send drafts to Gene Scarpulla at ejscarp@comcast.net.

TELL ME NOT HERE, IT NEEDS NOT SAYING

by E. Housman

Tell me not here, it needs not saying,
What tune the enchantress plays
In aftermaths of soft September
Or under blanching mays,
For she and I were long acquainted
And I knew all her ways.

On russet floors, by waters idle,
The pine lets fall its cone;
The cuckoo shouts all day at nothing
In leafy dells alone;
And traveller's joy beguiles in autumn
Hearts that have lost their own.

On acres of the seeded grasses
The changing burnish heaves;
Or marshalled under moons of harvest
Stand still all night the sheaves;
Or beeches strip in storms for winter
And stain the wind with leaves.

Possess, as I possessed a season,
The countries I resign,
Where over elmy plains the highway
Would mount the hills and shine,
And full of shade the pillared forest
Would murmur and be mine.

For nature, heartless, witless nature,
Will neither care nor know
What stranger's feet may find the meadow
And trespass there and go,
Nor ask amid the dews of morning
If they are mine or no.