



Phaëton

The Official Newsletter of the
Maryland Entomological Society

Volume 41, Number 10

July 2021

EDITOR: Aditi Dubey – aditid26@gmail.com

FACULTY SPONSOR: **Frank E. Hanson**
Department of Biological Sciences
University of Maryland Baltimore County (UMBC)
1000 Hilltop Circle
Baltimore, MD 21250

WEBSITE: <http://www.mdentsoc.org/>

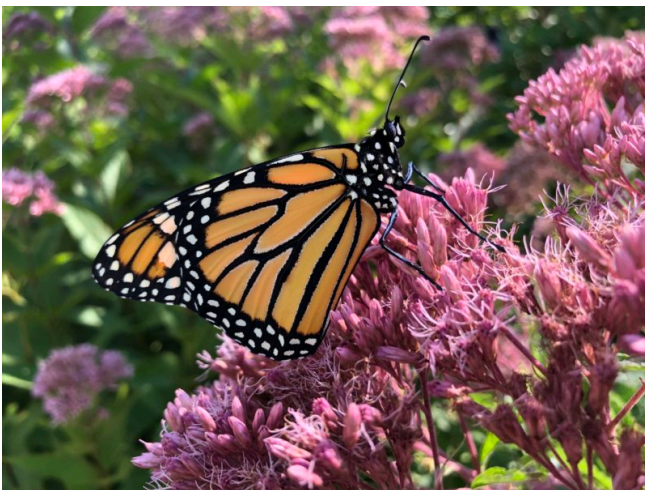
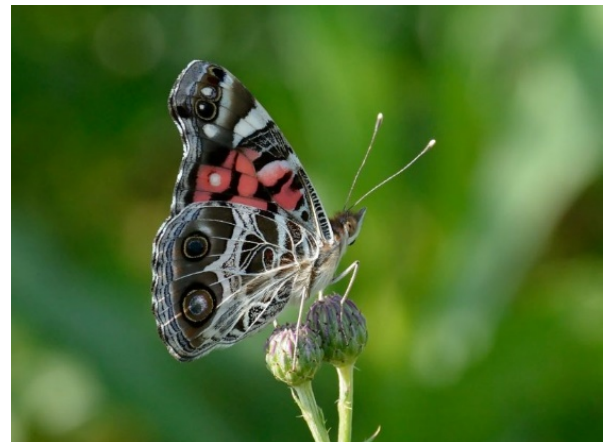
HOWARD COUNTY CONSERVANCY UPCOMING EVENTS

BUTTERFLY ID WALK

When: Saturday, August 14th, 9 – 10.15 AM
Where: Mt Pleasant, 10520 Old Frederick Road
Woodstock, MD 21163

It's summertime -- the butterflies are flying! Join a naturalists with the Howard County Bird Club for a walk around our gardens to learn how to identify some common beautiful butterflies. This is a beginning level walk appropriate for adults and children 10+ accompanied by an adult. \$10 per person. Space limited, advance registration required. Register now!

Find more information and register [here](#).



WILD WALK: MEET THE POWERFUL POLLINATORS

When: Tuesday, August 17th, 9:30 – 10.45 AM
Where: Mt Pleasant, 10520 Old Frederick Road
Woodstock, MD 21163

Join a small group, naturalist led walk of our Mt. Pleasant farmstead and see what you can discover! Topics vary on different dates and Wild Walks are fun for the whole family and can be adapted to engage all ages! \$10 per person. 48 hr Advance registration is required and all social distancing guidelines must be followed. Register now! Find more information and register [here](#).

WELCOME TO NEW MEMBERS

MES welcomes the following new members to the Society:

David Wood – Silver Spring, Maryland

CBP AGRICULTURE SPECIALISTS IN PHARR INTERCEPT RARE PEST, A FIRST IN THE NATION DISCOVERY

PHARR, Texas – U.S. Customs and Border Protection agriculture specialists at the Pharr International Bridge discovered a rare pest, a first in nation discovery, in a shipment of coconuts.

“By intercepting these exotic pests, our agriculture specialists help protect American agriculture and contribute to the nation’s economic security by denying entry to invasive species not known to exist in the U.S.” said Port Director Carlos Rodriguez, Hidalgo/Pharr/Anzalduas Port of Entry.



A specimen of Eburia nigrovittata, a first in nation pest interception made by CBP agriculture specialists at Pharr-Reynosa International Bridge.

On June 17, 2021, CBP agriculture specialists at the Pharr cargo facility conducted an inspection on a commercial shipment of coconuts arriving from Mexico, which resulted in the discovery of a live pest. The insect was submitted for identification to a U.S. Department of Agriculture entomology laboratory and the initial identification was later confirmed by a national specialist as *Eburia nigrovittata*. A member of the Cerambycidae family, the *Eburia nigrovittata* is a species of longhorn beetle, which feeds on stems, trunks, roots of herbaceous or woody plants and can cause extensive damage to living trees or untreated lumber. According to USDA entomologists, this pest has never been found at any of the nation’s ports of entry. CBP refused entry to the shipment and returned it back to Mexico.

The interception is an example of the diligent work CBP agriculture specialists do on a daily basis to fulfill CBP’s agriculture mission, which is crucial in preventing foreign pests from establishing in the United States. Pests that are not known to occur in the U.S. may be detrimental to the nation’s agriculture industry.

INSECTIVAL 2021

When: Saturday, July 24th, 9 AM - 1 PM

Where: Annmarie Sculpture Garden & Arts Center
13470 Dowell Rd, Solomons, MD 20688



Enjoy a variety of educational and artsy insect-themed activities, crafts, demonstrations, challenges, and fun photo ops. It’s a family day of buggy art and nature at the garden!

Local community groups, naturalists, and friendly insect experts will be on hand to share and celebrate the wonderful world of insects.

Find more information and buy tickets [here](#).



THE BEE SHORT COURSE FOR COMMUNITY SCIENTISTS



Join fellow bee fans for this free monthly webinar series. We'll explore the world of bees and learn together from bee experts to build skills as community scientists. Whether you're a seasoned wild bee volunteer or just beginning your bee journey, the skills learned in this series will prepare you to help our threatened pollinators.

All sessions are from 10 - 11:00AM EST on the third Friday of the month, May - November 2021

August 20: Heather Holm, author and biologist
“Insect Photography and Using iNaturalist to Observe and Document Wild Bees”

September 17: Sam Droege, USGS Native Bee Lab
“Tips and Tricks from The Handy Bee Manual”

October 15: Mary Gardiner, The Ohio State University
“Contributions of Community Science to Entomology: Benefits for People and Nature”

November 19: Molly Martin, Bee City USA/Xerces Society
“From Community Science to Advocacy in Action: Case Studies in Conservation”

This is a collaborative effort from: OSU Department of Entomology, The Chadwick Arboretum and Learning Gardens, and The US National Native Bee Monitoring Research Coordination Network (RCN).

Find more information and register [here](#).



**LADEW BUTTERFLY HOUSE NHSM LEP CLUB
PRIVATE TOUR AND PICNIC**

Where: Ladew Gardens, 3535 Jarrettsville Pike, Monkton, MD 21111

When: Wednesday, July 28, 2021, 5 – 7 PM

This field trip is open to current members of the NHSM Lep Club in good standing. If you are interested in becoming a member, click [here](#).



Please make plans to join us for this very special in-person event where we can safely gather together, see and learn about butterflies, and spend time in butterfly fellowship. The NHSM Lep Club will be the only visitors in the park for this special after hours event. Bring a picnic dinner.

Find more information and register [here](#).



INVASION ECOLOGY AND COMMUNITY SCIENCE

Speaker: Dr. Sara A. Tangren (Coordinator for the National Capital Partnership for Regional Invasive Species Management)

When: Thursday, August 12, 2021, 7 – 8 PM



Alien invasions are not the thing of science fiction. Plants and animals have been introduced intentionally and by accident from one part of the world to others. In this presentation Dr. Sara will explain the ecology of invasion and why it is that some alien species are here for centuries before becoming a problem, while others behave invasively immediately upon arrival.

If we could detect invading species before they became widespread, we could prevent a lot of damage and save billions of tax dollars. That's where community science can play a role. Dr. Sara will show us how data from citizen science apps are being used to detect invading species and map their distributions and offer guidance as to how to employ our favorite apps to make the most useful reports possible.

Find more information and register [here](#).



NHSM JULY 2021 RAFFLE

This month we are offering Crab Feast AND a Lifetime Membership to NHSM!

As an NHSM Lifetime Membership (value \$750) member you will receive discounts on many of our programs—from lectures, workshops, and courses offered in our museum—to canoe trips, nature walks, and fossil hunts in the great outdoors.



This month's NHSM raffle prize is a crab and shrimp feast donated by E Goodwin & Sons Seafood! Also included is a case of beer from Fairgrounds Discount Beverages. Just in time for your summer get together!

You will get:

- 1 Bushel of Steamed Crabs (E Goodwin & Sons)
- 5 pounds of Frozen Shrimp (E Goodwin & Sons)
- 1 Case of Beer

The bushel of crabs can be live or steamed – your choice. The shrimp will be a 5-pound bag of frozen jumbo shrimp. The winner will have to pick up their feast at E Goodwin & Sons Seafood at 7901 Oceano Avenue in Jessup, MD. The beer can be picked up earlier at Fairgrounds Discount Beverages in Timonium Square Shopping Center at 2157 York Road in Timonium, MD.

Tickets are \$5 and buying more than one ticket increases your chances of winning. Only 1000 tickets will be sold to benefit the Natural History Society of Maryland. Cut-off date to be entered is July 31, 2021, at noon.

Get more information and purchase your tickets [here](#).

2020/2021 PROPOSED MES EVENT SCHEDULE

Due to the COVID-19 pandemic, regular MES lecture/meetings are currently being held virtually on Zoom at 7:00 p.m. on the 3rd Friday of each of 6 months coinciding with UMBC's academic year. Proposed events for the current MES membership year are:

| Date | Speaker | Topic |
|--------|-----------------------|---|
| Oct 16 | Warren Steiner | Insects Associated with Local Milkweed |
| Nov 20 | Sam Droege | State of Wild Native Bee Populations in MD |
| Feb 19 | Samuel Ramsey | Despicable Mites: Recent Findings in the study of <i>Tropilaelaps mercedesae</i> and <i>Varroa destructor</i> |
| Mar 19 | Mike Raupp | Cicadas-Brood X |
| Apr 16 | Mike Turell | What Makes a Mosquito a Good Vector |
| May 21 | Members Presentations | |

OCT 2020-SEP 2021 MES MEMBERSHIP YEAR OFFICERS

| | |
|----------------------|---------------------|
| President | Frederick Paras |
| Vice President | Philip J. Kean |
| Secretary | Janet A. Lydon |
| Treasurer | Edgar A. Cohen, Jr. |
| Historian | (vacant) |
| Faculty Sponsors | Frank E. Hanson |
| Journal Editor | Eugene J. Scarpulla |
| E-newsletter Editors | Aditi Dubey |

SUBMITTAL DEADLINES

August 2021 issue of the *Phaëton*:

Please send member news items by 15th August 2021.

Send e-newsletter drafts to Addie at aditid26@gmail.com.

THE MOTH

By Walter de la Mare

Isled in the midnight air,
Musked with the dark's faint bloom,
Out into glooming and secret haunts
The flame cries, 'Come!'

Lovely in dye and fan,
A-tremble in shimmering grace,
A moth from her winter swoon
Uplifts her face:

Stares from her glamorous eyes;
Wafts her on plumes like mist;
In ecstasy swirls and sways
To her strange tryst.