



# Phaëton

The Official Newsletter of the  
Maryland Entomological Society

Volume 34, Number 9

June 2014

EDITOR: **Eugene J. Scarpulla** – [ejscarp@comcast.net](mailto:ejscarp@comcast.net)  
FACULTY SPONSORS: **Frank E. Hanson** and **Austin P. (Bob) Platt**  
Department of Biological Sciences  
University of Maryland Baltimore County (UMBC)  
1000 Hilltop Circle  
Baltimore, MD 21250  
WEBSITE: <http://www.mdentsoc.org/>

## MES Field Trip Announcement

**Location: Green Ridge State Forest near Flintstone in Allegany County, Maryland**

**Date: Saturday, 14 June 2014 (Rain Date: Sunday, 15 June)**

**Coordinator: Phil Kean, Maryland Entomological Society Vice President**

Please contact Phil at home, (410) 944-4630, if you plan to attend.

Nestled in the foothills of the Appalachian Mountains, a little more than 2 hours out of Baltimore, Green Ridge State Forest is a well known and popular collecting destination. The area is a rich blend of various habitats ranging from hardwood forest to oak/pine scrub to shale barrens and is crisscrossed by numerous streams and creeks. Its insect fauna is similarly diverse. Among the butterflies, it is home to a well known population of intergrading *Limenitis arthemis arthemis*/*L. arthemis astyanax* (White Admiral/Red-spotted Purple) as well as a good variety of other summer species. Various anglewings (*Polygonia* spp.), emperors (Apaturinae), and fritillaries (Heliconiinae) can be found here as well as a number of swallowtails (Papilionidae) and gossamerwings (Lycaenidae). Among the species recorded from this region in the period from late May to late June are most of the summer hairstreaks (Theclinae) such as *Satyrium calanus falacer* (Banded Hairstreak), *S. liparops* (Striped Hairstreak), *S. titus* (Coral Hairstreak), *S. favonius ontario* ('Northern' Oak Hairstreak), and *Parrhasius m-album* (White M Hairstreak).

The papilionid fauna includes the usual woodland and field species and may also yield such species as *Papilio appalachiensis* (Appalachian Swallowtail) or the occasional *P. cresphontes* (Giant Swallowtail). *Lethe anthedon* [alternately *Enodia anthedon*] (Northern Pearly-eye) is usually quite common in the forest. In addition to many of our common skippers (Hesperiidae), such scarcer ones as *Achalarus lyciades* (Hoary Edge), *Hesperia sassacus* (Indian Skipper), *Amblyscirtes vialis* (Common Roadside-Skipper), *A. hegon* (Pepper and Salt Skipper) and *Erynnis martialis* (Mottled Duskywing) have all been recorded from the region. There are historic records for all of these species from Green Ridge.

Moth collecting can be expected to turn up most of our state's large giant silkworm moths (Saturniidae) as well as a rich diversity of hawk moths (Sphingidae), underwings (Noctuidae), and others. The area is also a local favorite for beetle collectors as well.

### Directions

**From Baltimore:** Take Interstate 70 West to Hancock, MD. At Hancock, exit off I-70 and onto I-68 West towards Cumberland. This will take you through the big "notch" cut on Sideling Hill at the western edge of Washington County. Proceed west on I-68 until you reach the exit marker 15 Mile Creek Road. When you reach the stop sign at the end of the exit ramp, turn right and proceed downhill and go over a creek crossing. A little further and you will come upon a "hidden" left turn onto 15 Mile Creek Road. This will be our initial assembly area. From there we will visit a variety of sites within the forest for collecting, observing, and photographing.

**From Washington:** Take Interstate 270 North to Frederick, MD. Exit onto I-70 West toward Hagerstown and Hancock and proceed per Baltimore area directions.

For those interested in staying overnight to collect for moths, there is a Super 8 Motel on U.S. 522 in Hancock only about 20 minutes from Green Ridge. You could also choose to stay a little farther out near Cumberland. There is another Super 8, an Econo-Lodge, and a Comfort Inn in LaVale just west of Cumberland. And, for those of you who may yearn for something a little more "upscale," there's also the Rocky Gap Casino & Resort just east of Cumberland.

For those wishing to "car-pool," I will meet with those from the Baltimore area at the Park & Ride area at the dead end of I-70. From the Baltimore Beltway (I-695) take I-70 East until it dead ends at Leakin Park at the Baltimore City line. I will be there from 7:15 to 7:30 a.m. to allow us to condense into fewer cars. I will be driving a red Toyota RAV4. We will have to leave the Park & Ride no later than 7:45 a.m.

For Washington area people wishing to join in, we can make a brief stop at the McDonald's on U.S. Rt. 40 West in Frederick. Arrival time there should be between 8:15 to 8:30 a.m.

Anyone wishing to carpool will need to call Phil at his home number (410) 944-4630 or call Fred Paras at (410) 374-0425 (home) or (410) 458-6682 (cell) so we will know how many to expect. If we get more than 6-8 participants, we will likely break up into smaller groups.

**ANNUAL ELECTION OF MES OFFICERS**

The election of MES officers for the “October 2014 –September 2015” membership year was held at the 9 May 2014 meeting. The following list of incumbents agreed to serve again and were reelected.

Co-Presidents	Timothy Foard & Frederick Paras
Vice President	Philip J. Kean
Secretary	Richard H. Smith
Treasurer	Edgar A. Cohen, Jr.
Historian	(vacant)
Faculty Sponsors	Frank E. Hanson & Austin P. Platt
Publications Editor	Eugene J. Scarpulla

**WELCOME TO NEW MEMBERS**

MES welcomes the following new members to the Society:

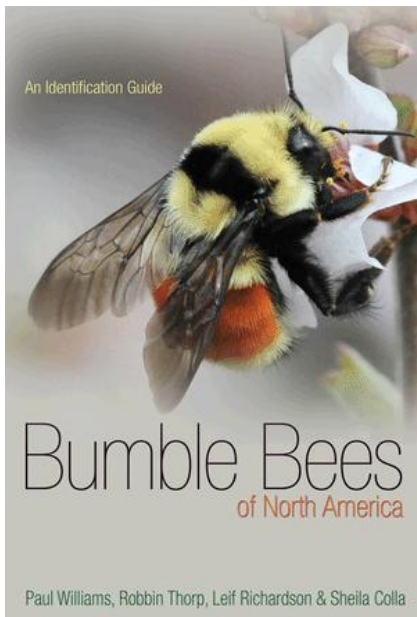
<b>David A. Gillum</b>	<b>Annapolis, MD</b>
<b>Tomas M. Mustelin</b>	<b>Potomac, MD</b>

\*\*\*New Release\*\*\*

**BUMBLE BEES OF NORTH AMERICA:  
AN IDENTIFICATION GUIDE**

**Paul H. Williams, Robbin W. Thorp, Leif L. Richardson,  
and Sheila R. Colla**

Princeton University Press, 2014  
208 pages, 6” x 9”, 150 color illustrations  
Paperback – \$24.95



[Quoted from the website]: “More than ever before, there is widespread interest in studying bumble bees and the critical role they play in our ecosystems. *Bumble Bees of North America* is the first comprehensive guide to North American bumble bees to be published in more than a century. Richly illustrated with color photographs, diagrams, range maps, and graphs of seasonal activity patterns, this guide allows amateur and professional naturalists to identify all 46 bumble bee species

found north of Mexico and to understand their ecology and changing geographic distributions.”

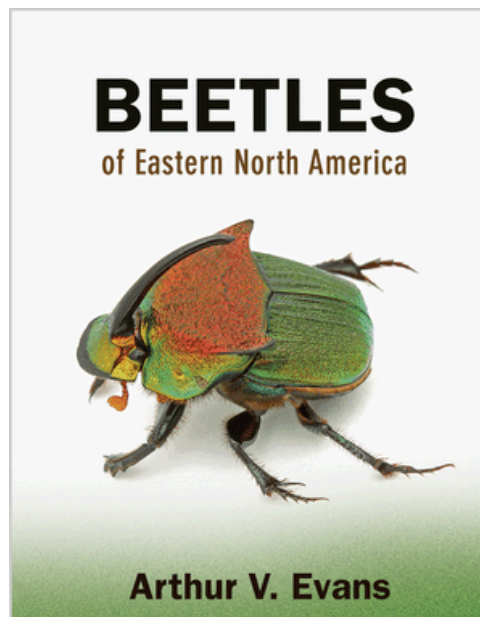
Additional information can be found at:  
<http://press.princeton.edu/titles/10219.html>.

(Editor’s Note: This publication is much more than a mere guide. It is an impressive reference, containing a wealth of information about the 46 species of North American bumble bees north of Mexico.)

\*\*\*New Release\*\*\*

**BEETLES OF EASTERN NORTH AMERICA  
Arthur V. Evans**

Princeton University Press, 2014  
560 pages, 8” x 10”, 1500+ color and 31 line illustrations  
Paperback – \$35.00



[Quoted from the website]: “*Beetles of Eastern North America* is a landmark book--the most comprehensive full-color guide to the remarkably diverse and beautiful beetles of the United States and Canada east of the Mississippi River. It is the first color-illustrated guide to cover 1,406 species in all 115 families that occur in the region--and the first new in-depth guide to the region in more than forty years. Lavishly illustrated with over 1,500 stunning color images by some of the best insect photographers in North America, the book features an engaging and authoritative text by noted beetle expert Arthur Evans.”

Additional information can be found at:  
<http://press.princeton.edu/titles/10218.html>.

(Editor’s Note: I purchased this book at last night’s Entomological Society of Washington’s annual banquet where Art Evans was the guest speaker. This is a massive reference with photos, photos, and more photos of eastern North American beetles. Informative text accompanies each species photograph. Art is beginning work on the companion volume *Beetles of Western North America*.)

### BALTIMORE CBP INTERCEPTS FIRST IN NATION FUNGUS MOTH

A 16 May 2014 U.S. Customs and Border Protection (CBP) news release reports that a U.S. Department of Agriculture (USDA) - Animal and Plant Health Inspection Service (APHIS) - Plant Protection and Quarantine (PPQ) identifier confirmed on 15 May 2014 that CBP agriculture specialists at the Port of Baltimore seaport discovered a first in nation moth. The specialists intercepted *Nemapogon gerasimovi* Zagulajev (Lepidoptera: Tineidae), a fungus moth, while inspecting a 50,000 pound shipment of bulk organic soybeans from China on 2 May 2014. The soybeans were destined for Pennsylvania and intended for animal feed. There were three subsequent interceptions of this pest from the same commodity/origin in the days following the initial find.



*Nemapogon gerasimovi* Zagulajev (Lepidoptera: Tineidae), a fungus moth. (Image courtesy of MES member Jim Young, Entomologist Identifier, USDA-APHIS-PPQ- Baltimore)

The full news release can be accessed at:

<http://www.cbp.gov/newsroom/local-media-release/2014-05-16-000000/baltimore-cbp-intercepts-first-nation-moth>.

### DULLES CBP INTERCEPTS FIRST IN NATION HAWK MOTH

A 21 May 2014 U.S. Customs and Border Protection (CBP) news release reports that a U.S. Department of Agriculture (USDA) - Animal and Plant Health Inspection Service (APHIS) - Plant Protection and Quarantine (PPQ) identifier confirmed on 15 May 2014 that CBP agriculture specialists at Washington Dulles International Airport made a first in nation pest discovery when they intercepted *Laothoe populi* (Linnaeus) (Lepidoptera: Sphingidae), the Poplar Hawk Moth, while inspecting a shipment of cut flowers from The Netherlands on 26 April 2014. The flowers had been grown in Uganda and were destined for a flower shop in Virginia.



**Poplar Hawk Moth, *Laothoe populi* (Linnaeus) (Lepidoptera: Sphingidae).** Male. (Image courtesy of MES member Jim Young, Entomologist Identifier, USDA-APHIS-PPQ- Baltimore)

*Laothoe populi* is primarily a pest of poplar and aspen but has been recorded from willow, alder, birch, elm, oak and ash. In Europe the species has 1 to 2 broods a year and overwinters as a pupa. The adults are dimorphic with males (above) being gray and brown while females are tan and brown. Gynandromorphs are apparently common.

The full news release can be accessed at:

<http://www.cbp.gov/newsroom/local-media-release/2014-05-21-000000/dulles-cbp-intercepts-first-nation-hawk-moth>.

### RECENT CBP / USDA-APHIS-PPQ INTERCEPTIONS

***Sciocoris maculatus* Fieber (Hemiptera: Pentatomidae) – a stink bug**



Baltimore CBP again intercepted the reportable stinkbug *Sciocoris maculatus* Fieber (Hemiptera: Pentatomidae) in a shipment of tile from Italy.



**Megacopta cribraria (Fabricius) (Hemiptera: Plataspidae) – Kudzu Bug**

In May 2014, a small infestation of the Kudzu Bug, *Megacopta cribraria* (Fabricius) (Hemiptera: Plataspidae), was found on a ship deck in the Port of Baltimore. This species is now widely established in most of the Southeastern United States. (*Editor's Note: The September 2014 issue of The Maryland Entomologist will feature a comprehensive article about the Kudzu Bug in Maryland.*)

Photos and text submitted by MES member **Jim Young**, Entomologist Identifier, USDA-APHIS-PPQ- Baltimore.

---

**ENTOMOLOGICAL SOCIETY OF WASHINGTON  
ANNUAL BANQUET**

At least 12 MES members attended the Entomological Society of Washington (ESW) annual banquet on the evening of 5 June 2014. (Many MES members are also members of ESW.) The evening included a cocktail hour and potluck dinner, and was capped by Arthur V. Evans' engaging presentation "My Inordinate Fondness for Beetles." The presentation chronicled Art's life and his ever-present interest in beetles from a young child to the present. The ESW annual banquet is always an enjoyable social occasion.

---

**AUDUBON NATURALIST SOCIETY  
BUTTERFLY FIELD TRIP**

**Sat, 14 June 2014 – Eastern Neck National Wildlife Refuge**  
Search for early summer butterflies at Eastern Neck Wildlife Refuge, situated near the mouth of the Chester River and the Chesapeake Bay. We'll explore up to a couple of miles in generally open and sunny terrain as we explore the meadow, woodland, and beach habitats of this natural area. We'll hope to spot and identify a wide variety of species, all the while discussing their life histories and host plant relationships.  
LEADERS: MES members **Dick Smith** and **Stephanie Mason**; [Stephanie.Mason@ANShome.org](mailto:Stephanie.Mason@ANShome.org) or Office #: (301) 652-9188, Ext. 37. Registration required, please visit <http://www.audubonnaturalist.org/index.php/nature-programs/adults>.

---

**NATIONAL POLLINATOR WEEK  
16-22 JUNE 2014**

Pollinator Week was initiated and is managed by the [Pollinator Partnership](#).

Seven years ago, the United States Senate's unanimous approval and designation of a week in June as "National Pollinator Week" marked a necessary step toward addressing the urgent issue of declining pollinator populations. Pollinator Week has now grown to be an international celebration of the valuable ecosystem services provided by bees, birds, butterflies, bats, and beetles. The growing concern for pollinators is a sign of progress, but it is vital that we continue to maximize our collective effort. The United States Secretary of Agriculture signs the proclamation every year.

Pollinating animals, including bees, birds, butterflies, bats, beetles, and others, are vital to our delicate ecosystem, supporting terrestrial wildlife, providing healthy watersheds, and more. Therefore, Pollinator Week is a week to get the importance of pollinators' message out to as many people as possible. It's not too early to start thinking about an event at your school, garden, church, store, etc. Pollinators positively affect all our lives – let's SAVE them and CELEBRATE them!

Additional information can be found at:

[http://pollinator.org/pollinator\\_week\\_2014.htm](http://pollinator.org/pollinator_week_2014.htm).

---

**NORTH AMERICAN BUTTERFLY ASSOCIATION  
BUTTERFLY COUNTS**
**Tue, 24 June 2014 – NJ: Cumberland County**

Contact: Pat Sutton via e-mail at [patclaysutton@comcast.net](mailto:patclaysutton@comcast.net) or home phone at (609) 465-3397 (be prepared to leave a message); cell phone, (609) 425-3434, will be on the day of the count but otherwise rarely used.

**Wed, 25 June 2014 – NJ: Belleplaine**

Contact: Teresa Knipper via cell phone at (609) 558-0582 or e-mail at [teresa.knipper82@gmail.com](mailto:teresa.knipper82@gmail.com).

**Sat, 28 June 2014 – MD: Western Montgomery County**

Contact: Stephanie Mason, compiler.

[Stephanie.Mason@ANShome.org](mailto:Stephanie.Mason@ANShome.org). Office: (301) 652-9188, Ext. 37.

**Fri, 4 July 2014 – VA: Maidens**

Contact: Carolyn P. Henly, [cphenly@comcast.net](mailto:cphenly@comcast.net).

**Sat, 5 July 2014 – VA: Island Ford**

Contact: Mike Smith at [foresmiths@comcast.net](mailto:foresmiths@comcast.net); phone (540) 298-1913.

**Sat, 12 July 2014 – VA: Reston**

Contact: Katie Shaw, [naturecenter@reston.org](mailto:naturecenter@reston.org); (703) 476-9689.

**Sat, 12 July 2014 – VA: Richmond**

Contact: James Shelton, [James\\_Shelton32@yahoo.com](mailto:James_Shelton32@yahoo.com); mobile: (804) 301-4102.

**Sat, 12 July 2014 – MD: Prince George's County**

Contact: Clearwater Nature Center; Glenda Jordan, [glenda.jordan@pgparks.com](mailto:glenda.jordan@pgparks.com) (alternate:

[ClearwaterNatureCenter@gmail.com](mailto:ClearwaterNatureCenter@gmail.com)).

**Sun, 13 July 2014 – VA: Shenandoah National Park**

Contact: Mike Smith at [foresmiths@comcast.net](mailto:foresmiths@comcast.net); (540) 298-1913.

**Tue, 15 July 2014 – NJ: Cape May**

Contact: Michael O'Brien, [tsweet@comcast.net](mailto:tsweet@comcast.net).

For detailed information on each butterfly count visit the Lep Log website at: <http://leplog.wordpress.com/2012-season-mid-atlantic-count-and-field-trip-calendar/>.

---

### MASONVILLE COVE ENVIRONMENTAL EDUCATION CENTER BIOBLITZ

**Sat, 28 June 2014**

This is the first BioBlitz at Masonville Cove. A BioBlitz is an all day event where wildlife experts and community volunteers work together to find, identify, and record as much wildlife as possible. At the Masonville Cove BioBlitz, we will learn about the plants and animals in an urban wetland. We will use iNaturalist, a community-based program, to help record as we explore biodiversity at the Cove. Have fun and learn what actions we can take to protect wild creatures through hands-on activities.

Experts, volunteers, and participants needed! Register for the BioBlitz through the Conservation Department at the National Aquarium : (410) 576-1508 or [conserve@aquaria.org](mailto:conserve@aquaria.org).

Masonville Cove Environmental Education Center is located at 1000 Frankfurst Avenue, Baltimore, Maryland 21226.

Additional information about Masonville Cove can be found at: <http://www.masonvillecove.org/>.

---

### 2<sup>nd</sup> ANNUAL PENNSYLVANIA FIREFLY FESTIVAL

**Sat, 28 June 2014, 12:00 p.m. – 12:00 a.m.** (noon to midnight)

The festival features *Photinus carolinus* Green (Coleoptera: Lampyridae), a synchronous firefly. This location is one of the few known locations for synchronous fireflies outside of Southeast Asia. The festival will also feature *Photuris versicolor* (Fabricius), a firefly known as the "Chinese Lantern." *Photuris pennsylvanica* (De Geer) is the official state insect of Pennsylvania. More than 15 firefly species have been found in Forest and Warren Counties. During the day, there will be exhibits, arts/crafts, music, food and fun for kids. The firefly displays start around 10:00 p.m.

The Festival takes place on the grounds of the Black Caddis Ranch B & B in Kellettsville, Forest County, just 15 miles east of Tionesta on Route 666. The address is 13558 Route 666, Tionesta, PA 16353. Additional information can be found at: <http://www.pafireflyfestival.blogspot.com/>.

---

### CENTRAL MARYLAND BEEKEEPERS ASSOCIATION MEMBERS MEETINGS

**Tue, 1 July 2014; 7:00 p.m.**

**"The Native Bees of Hart-Miller Island, Maryland"**

**Gene Scarpulla** (MES member and Associate at the USGS Bee Inventory and Monitoring Laboratory, Patuxent Wildlife Research Center)

**Tue, 2 September 2014; 7:00 p.m.**

**"Report from the Front Lines: Bee Informed Partnership and UMD Research"**

**Karen Rennich** (MES member and Project Manager of the Bee Informed Partnership and the APHIS National Survey)

**Tue, 7 October 2014; 7:00 p.m.**

**"On Ground-nesting Bees"**

**Sam Droege** (MES member and Head of the USGS Bee Inventory and Monitoring Laboratory, Patuxent Wildlife Research Center)

Members meetings are held at the Oregon Ridge Nature Center, 13555 Beaver Dam Road, Cockeysville, Maryland. Additional information can be found at:

<http://www.centralmarylandbees.org/meetings-3/membership-meeting-schedule/>.

---

### NATIONAL MOTH WEEK 19-27 JULY 2014

National Moth Week offers everyone, everywhere a unique opportunity to become a Citizen Scientist and contribute scientific data about moths. Through partnerships with major online biological data depositories, National Moth Week participants can help map moth distribution and provide needed information on other life history aspects around the globe. For information about events in your state, visit <http://nationalmothweek.org/>.

---

### THE INTERNATIONAL HETEROPTERISTS' SOCIETY 5<sup>TH</sup> QUADRENNIAL MEETING

**Mon-Fri, 21-25 July 2014**

The Fifth Quadrennial Meeting of the International Heteropterists' Society will be held at the National Museum of Natural History, Smithsonian Institution, Washington, DC. Additional information can be found at: <http://ihs.myspecies.info/content/5th-quadrennial-meeting-july-2014>.

---

### BERKS COUNTY, PENNSYLVANIA BUTTERFLY FIELD TRIPS

**Sat, 2 August 2014 – Near Lake Ontelaunee; 10:00 a.m.**

This is a joint walk of the Mengel Natural History Society and the Baird Ornithological Club. Meet at Dam Breast on PA-73. Participants will drive to a nearby location. Participants often see 20 species on this walk. LEADERS: Ryan Woolwine, (610) 777-2333, Ken Lebo, (610) 856-1413, and Karl Gardner, (610) 987-3281.

**Sat, 30 August 2014 – Angelic Park; 10:00 a.m.**

The first walk at this location maintained by the Berks County Conservancy. Take PA-10 south from Lancaster Avenue 1-1/4 miles. The park entrance road is on the right at the big masonry sign for Alvernia University. Turn right and park at the first parking area on the right. LEADERS: Karl Gardner (610) 987-3281, Ken Lebo (610) 856-1413, and Ryan Woolwine (610) 777-2333.

**HOWARD COUNTY BIRD CLUB  
“BUTTERFLIES THROUGH BINOCULARS”**

**Sat, 30 August 2014; 9:30 a.m.**

Lake Elkhorn Powerline Vegetation Management Study Tract.  
Meet 9:30 a.m. Elkhorn Garden Plots, Oakland Mills Road  
opposite Dasher Court. No facilities. Leader: MES member  
**Dick Smith**. [Richard.Smith@jhuapl.edu](mailto:Richard.Smith@jhuapl.edu) or (410) 997-7439.

---

**“THE GREAT INSECT FAIR”  
PENN STATE UNIVERSITY**

**Sat, 13 September 2014; 10:00 a.m. – 4:00 p.m.**

Bryce Jordan Center, Penn State University  
Admission to the fair is FREE, but donations are accepted and  
greatly appreciated! Additional information can be found at:  
<http://ento.psu.edu/public/kids/great-insect-fair>.

---

**2014 PROPOSED MES EVENT SCHEDULE**

Regular MES lecture/meetings are held at UMBC on the 3<sup>rd</sup>  
Friday of each of the 6 months coinciding with UMBC’s  
academic year. Proposed events for 2014:

<u>Date</u>	<u>Speaker</u>	<u>Topic</u>
Feb 21	Andrew Ulsamer	Colony Collapse Disorder
Mar 21	Stuart McKamey	Aliens of the Amazon: Treehoppers

---

Apr 18	Paul Goldstein	Southern New England Coastal Sandplain
May 9	Members’ & Students’	Presentations & Elections
Jun 14	Survey/Field Trip	Green Ridge State Forest
Sep 21	Crab Feast/Meet-&-Greet	at J. KING’S Restaurant
Oct 17	Lecture	TBA
Nov 21	Lecture	TBA

---

**OCT 2013 – SEP 2014 SOCIETY YEAR OFFICERS**

Co-Presidents	Timothy Foard & Frederick Paras
Vice President	Philip J. Kean
Secretary	Richard H. Smith
Treasurer	Edgar A. Cohen, Jr.
Historian	(vacant)
Faculty Sponsors	Frank E. Hanson & Austin P. Platt
Publications Editor	Eugene J. Scarpulla

---

**SUBMITTAL DEADLINES**

JUL 2014 issue of the *Phaëton*:

Please send member news items by 4 July 2014.

SEP 2014 issue of *The Maryland Entomologist*:

First drafts of articles and notes are due ASAP.

Send drafts for both publications to [ejscarp@comcast.net](mailto:ejscarp@comcast.net).

---